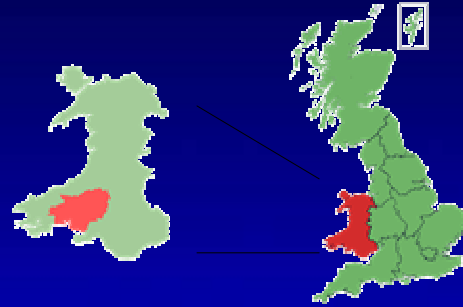


HOW TO MAKE SFs ACCESSIBLE WELSH EXAMPLE

based on presentations by
Elid Morris, West Wales European Centre
Darren Hollick, Wales Council for Voluntary Action



Carmarthenshire – where it is?



Financial Allocation of 2000-2006 Programmes

Objective 1	£1.34b	(Regeneration Program: 7 priorities)
Objective 2	£90.1m	
Objective 3	£92.4m	
EQUAL	£14.6m	
Interreg IIIA	£33.9m	
URBAN II	£7.5m	
LEADER+	£10.33m	

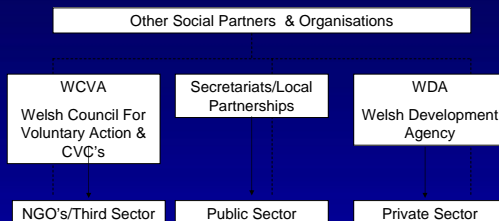


The Partnership Approach

- Three parts principle
- Equal Representation
- Holistic Approach & Perspective
- Increased capacity to identify and address need



The Support Structure



What support institutions do?

- Administer the so called 'Key Funds' (re-granting schemes)
- Hire 'Community Ambassadors'
- Provide individual support to develop projects free of charge
- Support to implement projects free of charge
- The starting point for all customers + information point + Website
- Links with external bodies
- Support to write bids
- Training and advice and guidance locally, regionally and programme wide, ESF + ERDF inspection visits

Funded from Structural Funds (technical assistance)!



Benefits of Key Funds

- Easier access for smaller community groups
- Eligible activities defined by real needs of regions, small-scale projects possible, support for social enterprises
- Develops the capacity of smaller groups
- **Bureaucracy dealt with by project officers - not local communities**
- Proven audit process in place
- Easier life for beneficiaries: easy application process, limited bureaucracy, reporting to local partnership instead to MA or to EC, no match funding is required



The Structure Of Project Selection

WEFO (Welsh European Funding Office)

- Score applications
- Ensure compliance & Eligibility
- Measure applications against regional and national strategies

The Local Partnerships

- Comment on applications
- Measure applications against local strategies

Thematic Advisory Groups

- Select projects for support
- Review comments of local partnership



Implementation

Partnerships have been established to support the implementation of the programme:

- 15 local partnerships
- 6 thematic advisory groups
- Strategies prepared for each local partnership area
- Vehicles for delivering Objective 1



Priority 3: Community Economic Regeneration

Measures

- Community action for social inclusion (ESF)
- Partnership and community capacity building (ERDF)
- Regeneration of deprived areas through community-led activities (ERDF)
- Support for the creation and development of business in the social economy



Social Economy

“The social economy is a wider concept and includes the many and varied organisations that work outside the private and public sector.

It includes voluntary organisations, community groups, self-help groups, community co-operatives and enterprises, religious organisations and other not-for-profit distribution organisations of benefit to the communities and people of Wales.”

Source: *Social Enterprises Strategy for Wales, Welsh Assembly Government (June 2005)*



What is a social enterprise?

“A business with primarily social objectives whose surpluses are principally reinvested for that purpose in the business or in the community, rather than being driven by the need to maximise profit for shareholders and owners.”

Source: *Social Enterprises Strategy for Wales, Welsh Assembly Government (June 2005)*



What do social enterprises offer?

- Provide routes to mainstream employment
- Create sustainable jobs
- Retain wealth within the local community
- Contribute to community regeneration
- Encourage active citizenship
- Make money in a socially and environmentally responsible way
- Identify and promote the needs of local communities
- Improve service delivery to meet local needs
- Reach out to those who are economically inactive



For more information:

Juraj Zamkovsky

Friends of the Earth-CEPA
Ponická Huta 65, 976 33 Poniky, Slovakia
tel/fax: +421 48 4193 718
e-mail: zamkovsky@changenet.sk
www.foe.sk/cepa

